

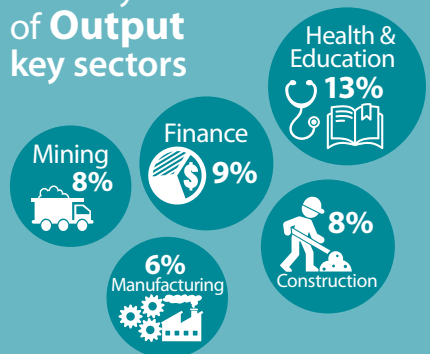
Composition of the Australian Economy

SNAPSHOT

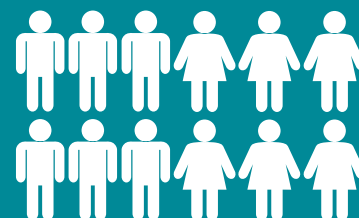
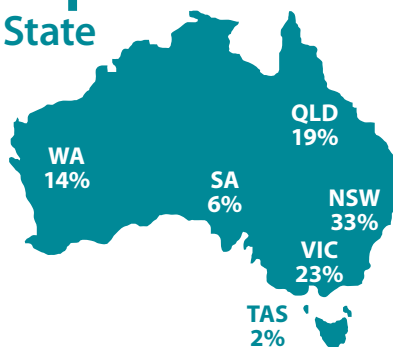
8 February 2018



Industry Share of Output key sectors



Output Share by State



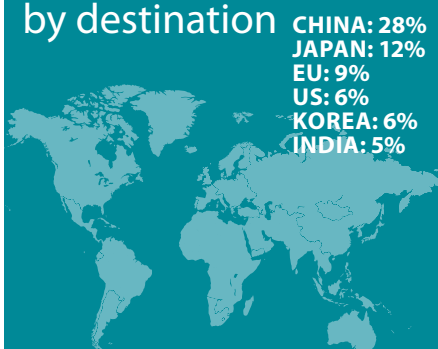
Population
24.6 million
1.6% annual growth

Export Share by type

Resources: **52%**
Services: **23%**
Rural: **13%**
Manufactured: **10%**



Export Share by destination



Employment to population ratio

62%

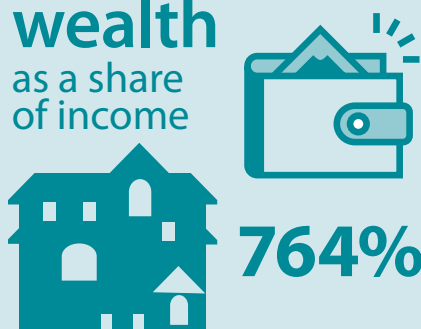


Average Price of Residential Dwellings
\$681 100



Household wealth

as a share of income



Household debt

as a share of income

188%



Data in this snapshot are the latest available as at 6 February 2018.