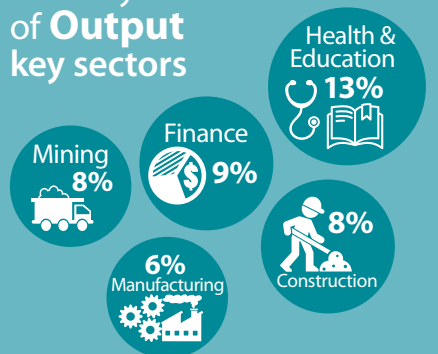


# Composition of the Australian Economy

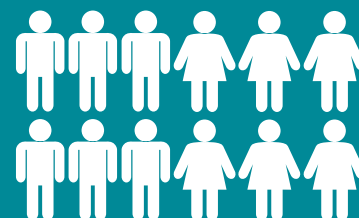
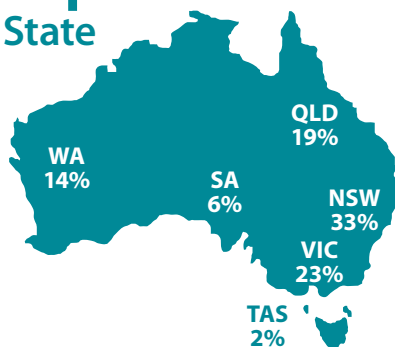
## SNAPSHOT 3 October 2018



### Industry Share of Output key sectors



### Output Share by State



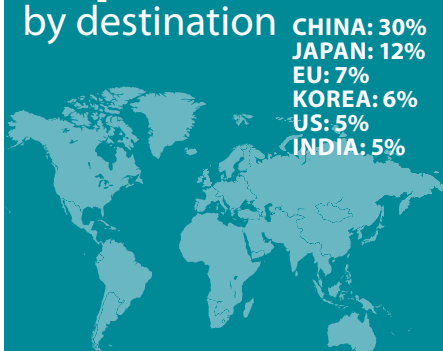
Population  
**24.9 million**  
**1.6%** annual growth

### Export Share by type

Resources: **57%**  
Services: **21%**  
Rural: **11%**  
Manufactured: **9%**



### Export Share by destination



### Employment to population ratio

**62%**



Average Price of Residential Dwellings  
**\$686,200**



### Household wealth

as a share of income



**775%**

### Household debt

as a share of income

**191%**



Data in this snapshot are the latest available as at 3 October 2018.

 [www.rba.gov.au](http://www.rba.gov.au)

 @RBAInfo

 @ReserveBankAU



RESERVE BANK OF AUSTRALIA